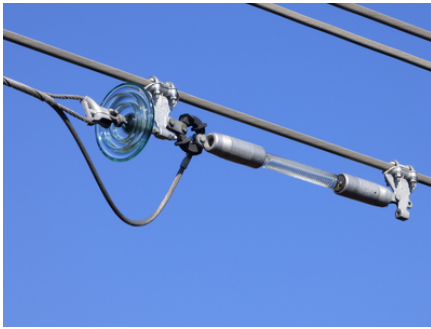
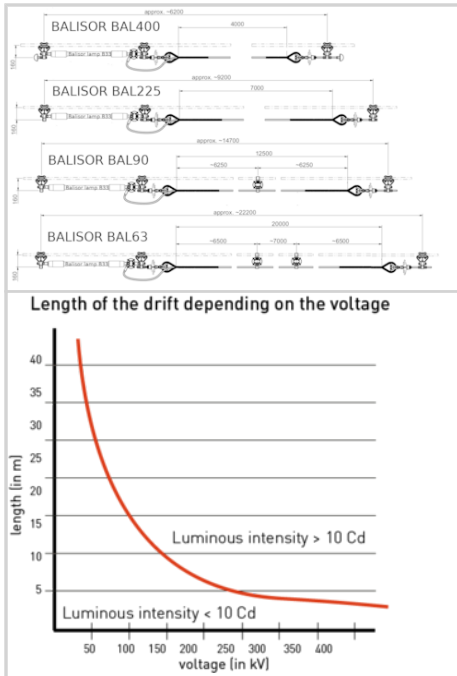


Obstruction lighting system for high voltage lines



- suitable for high voltage from 60KV to 400KV with fixing accessories and capacitive elements with a cable
- clamp adapted to the diameter of the cable
- BALISOR® lamp B33 P/N100616 with interference suppression included
- red fixed color with light intensity higher than 10 candelas

The power supply by capacitive effect ensures a constant light intensity whatever is the value of the electric current crossing the line



| Mechanical Characteristics | |
|-----------------------------|--|
| Cable diameter | Ø19-32mm |
| Attachment | Aluminium clamps |
| Photometric Characteristics | |
| Luminous intensity | > 10 Cd |
| Standards | |
| Standards compliance | ICAO Aerodrome Design Manual Part 4 chapter 14 |