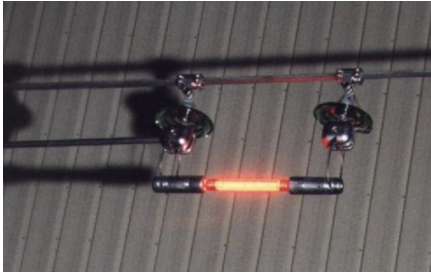


Obstruction lighting system for high voltage lines, red fixed low intensity



The BALISOR® system comprises :

- long life cold neon discharge lamp B49 manufactured by OBSTA,
- a set of capacitive tapings in aluminium, the length depends on the voltage of the line to be protected,
- a set of flexible accessories for suspension and insulation which depends on diameter of the cable

The power supply by capacitive effect ensures a constant light intensity whatever is the value of the electric current crossing the line

Poids d'un élément	Code	Désignation	110KV	110KV	220KV	300KV et plus
0,82 kg	100017	Mâtchone équipée	2	5	4	2
3,20 kg	100017	Mâtchone avec équipé	1	5	4	2
0,12 kg	100037	Tresse de shunt	1	1	1	-
0,20 kg	100038	Patrimoine simple	2	5	-	-
2,07 kg	100031	Patrimoine porteur lampe	-	-	2	-
1,11 kg	100032	Patrimoine porteur blindé	-	-	2	2
3,20 kg	100033	Éléments support (conducteurs auxiliaires)	5	4	2	1
0,50 kg	100006	Suspension simple	2	2	-	-
0,20 kg	100034	Endroit à visserie	2	2	-	2
0,12 kg	100035	Tresse de shunt	-	-	-	1
1 kg	100037	Mâtchone équipée système B	-	-	-	2
0,48 kg	100036	Isolant anti vibration	-	-	-	1
0,20 kg	100039	Supporte protection colonne	-	-	-	1
0,70 kg	100016	Lampe BALISOR B132	1	1	1	1
4,02 kg	100016	Lampe BALISOR B132	-	-	-	-

Electrical Characteristics	
Power source	Autonomous by capacitive effect
Mechanical Characteristics	
Attachment	Aluminium clamps matching with the diameter of the cable
Photometric Characteristics	
Luminous intensity	> 10 Cd
Standards	
Standards compliance	ICAO Aerodrome Design Manual Part 4 chapter 14

Length of the drift depending on the voltage

