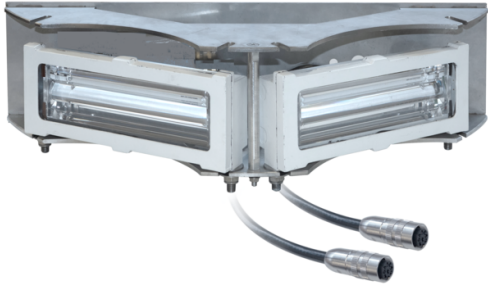


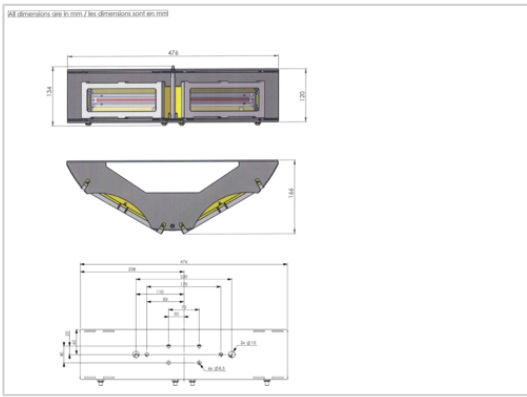
This dual color medium intensity is designed for day and night marking of obstacle such as chimneys, pylons and high rise buildings (3 or more lights are required per level depending on diameter of the obstacle)



The flashhead OFFP-120-RW-XL includes

- 2 led projectors coming with 'X' meter of cable and connector (up to 30 meters to be defined at time order)
- Stainless support for the 2 projectors

Patents: EP3230651, FR1462349, Pat. 10,247,386



Mechanical Characteristics	
Wiring	X meter of molded cable with connector
Operating temperature	-40/+55°C
Size of the light	120mm (height) x 480mm (width)
Weight	4kg
Photometric Characteristics	
Effective light output day time at 0° on site	20 000cd (white)
Effective light output twilight mode at 0° on site	20 000cd (white)
Effective light output night mode at 0° on site	2000cd (red)
Color day/twilight time	white
Color night time	Red
Horizontal beam spread	360° with minimum 3 flashheads fixed at 120° around the obstacle
Flash per minute	40
Standards	
Standards compliance	ICAO annexe 14 chapter 6 (8th edition 07/2018), EASA (4th edition 2017)