



Installation instructions
for P/N :
114798-048 // 114798-240

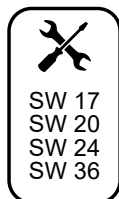


114792-048



114792-240

Cable gland mounting



1

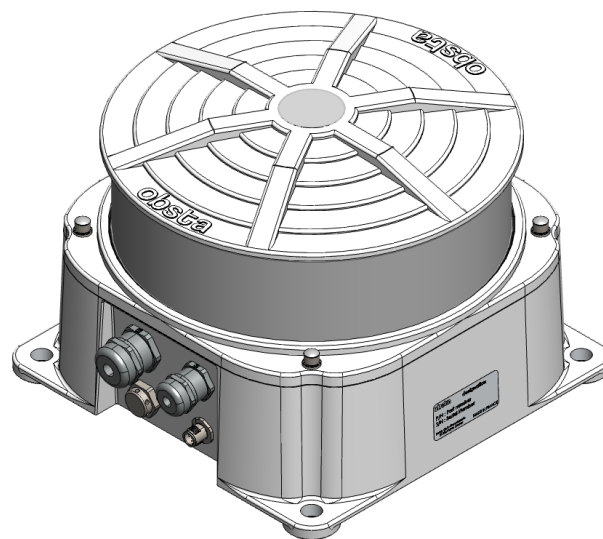
Tape end to prevent
shield removal

15 mm

2

Looser

3



Technical data OFD

Input voltage	- 48 Vdc $\pm 5\%$ (P/N - 114798-048) - 110-240 $\pm 10\%$ (P/N - 114798-240)
Norm	- IP66 - ICAO type A,B and C with IR
Temperature	- From -40°C to +55°C
Alarm condition	- Light issues - Power supply issues - Photocell / GPS issues
Weight	- 10 Kg
Attachment	x4 diam 14

Box/Lamp connection



Allen 5
SW 24
SW 30
Flat screwdriver 3mm



Lamp

Box

OPENING :

The OFD must be opened by a qualified technician.
To open the OFD, unscrew the 4 M6 x 25 fixing screws, then open the lamp assembly, paying attention to the internal wiring harness. Make the necessary connections and/or modifications to the control board.

CLOSE :

Replace the 'lamp' part, then screw in the 4 M6 x 25 screws crosswise with a tightening torque of 10Nm. The installer/repairer is advised to check the integrity and location of the seal before closing the beacon, otherwise the seal may be damaged and irreversible damage may occur.

CONNECTION :

We strongly recommend that you follow the installation instructions for the cable glands.

The two cable glands accommodate 7 to 13 mm diameter cables (M20 gland) for synchronization and alarm feedback, and 9 to 17 mm diameter cables (M25 gland) for power supply.

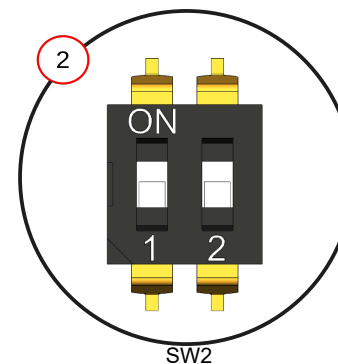
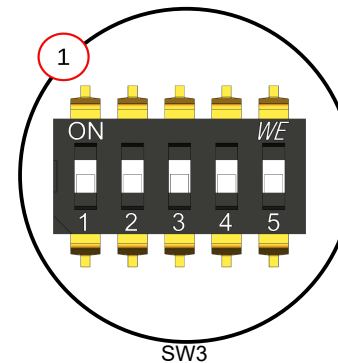
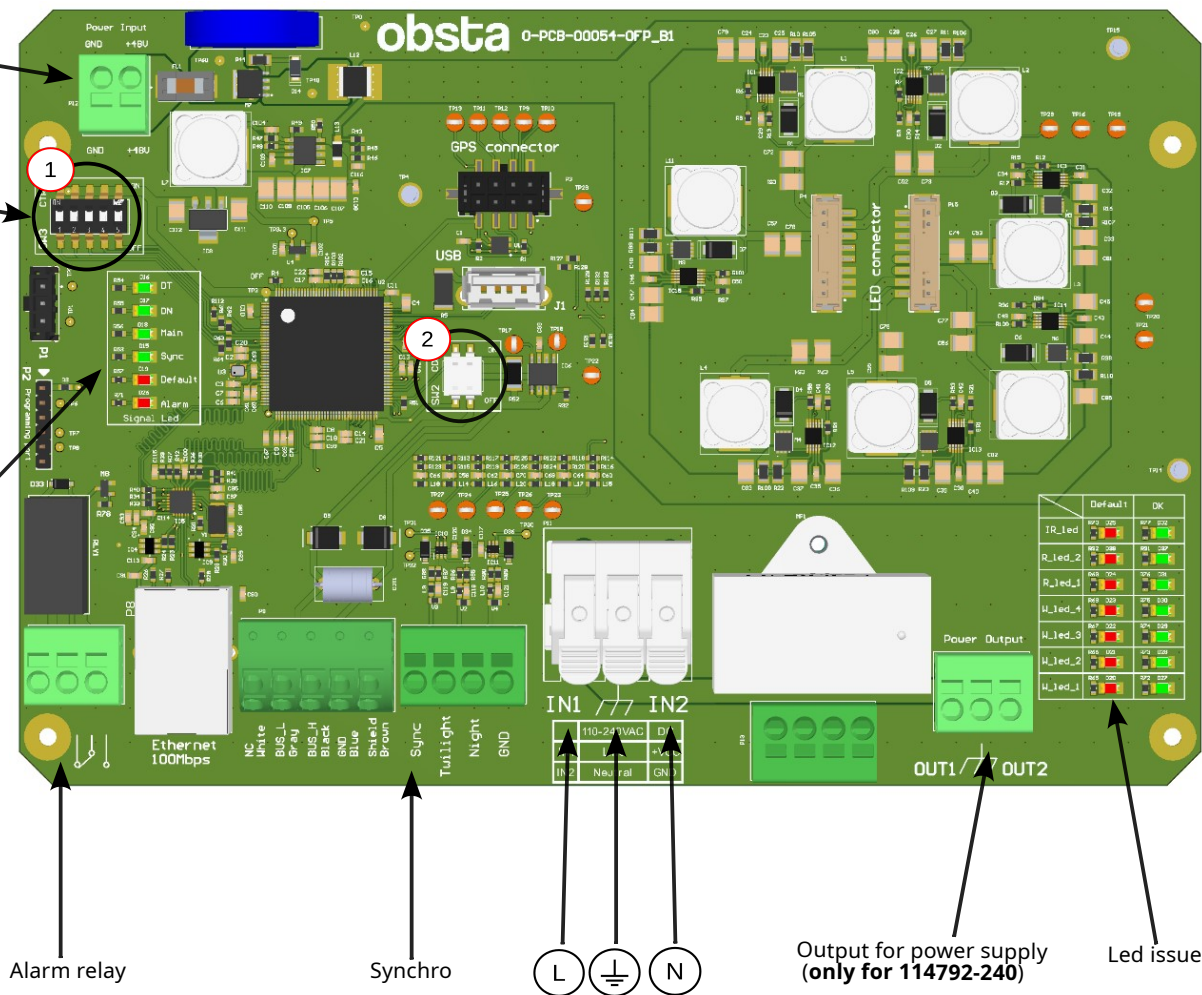
Once the cables have passed through the glands, connect them to the control board (PCB) following the instructions on page 2.

Carde feature

Input for power supply
(only for 114792-240)

Switch 3

Operation issues



SW2 setting

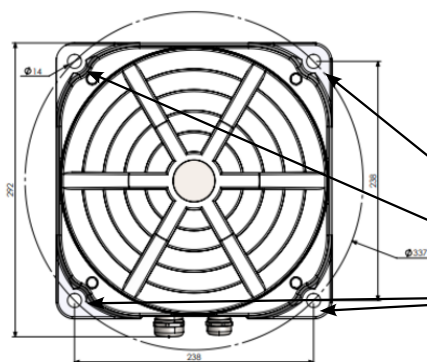
1	2	
0	0	End resistor* desactivated
0	1	End resistor* activated
1	0	-
1	1	-

*More detail in user manual

SW3 setting

	1	2	3*	4*	5
ON	Nominal	Master	Override Day	Override night	-
OFF	Reset	Slave	-	-	-

Fixation



- The light assembly fixture must be mounted perfectly on horizontal to meet the optical specification required for Aircraft Obstruction lights.
- Use M12 screw.
- We recommend a torque of 60Nm for optimum clamping.



ATTENTION !

EN

- Installation must be performed only by electrically skilled operator
- National electrical installation rules must be respected
- For installation with high electromagnetic fields, the power supply cable must be shielded
- When installed on a chimney, the Navilite must be installed below the aperture so that the smokes will not mask the light (ICAO annex 14 chapter 6 recommendations)
- The ambient temperature must be lower than 55°C when working



ATTENTION !

FR

- L'installation doit être effectuée uniquement par un opérateur qualifié en électricité
- Les normes nationales d'installation électriques doivent être respectées
- En présence de champs électromagnétiques forts, le câble doit être blindé et son blindage raccordé à la terre.
- Lorsque la Navilite est installée sur une cheminée, la fixer impérativement en dessous de son sommet afin d'éviter que la fumée ne masque le feu (recommandations de l'annexe 14 de l'OACI).
- La température ambiante dans laquelle se trouve la Navilite ne doit pas dépasser 55°C en fonctionnement.



ATENCIÓN !

ES

- La instalación debe ser realizada por un electricista calificado
- Las reglas de instalación eléctrica nacionales deben ser respetadas
- En caso de instalación en campos electromagnéticos elevados, el cable de alimentación debe ser blindado
- En caso de instalación en una chimenea, la Navilite debe ser instalada por debajo de la apertura de tal manera que el humo no esconde la luz (Recomendaciones de la ICAO Anexo 14 capítulo 6)
- La temperatura ambiental debe ser inferior a 55°C durante su operación

Dimensions

