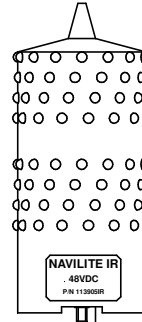


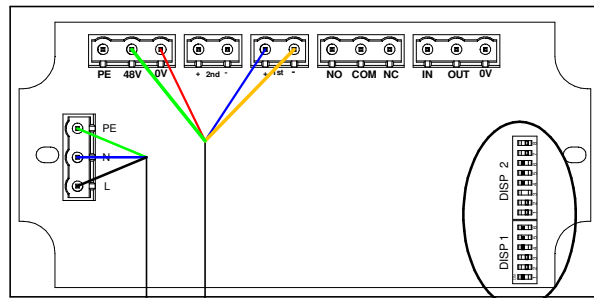
This drawing is the property of OBSTA. This document cannot be reproduced, copied or communicated with third parties without the authorization of OBSTA. Ce document est la propriété d'OBSTA. Il ne peut être reproduit ou communiqué à des tiers sans son autorisation.

113912	113905IR
+ 1 st	+ 48
1 st -	- 48
48V	+ 48
0V	- 48

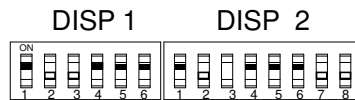
NAVILITE
P/N: 113905IR



NAV-CMD-SOL
P/N: 113912



Power
input



- | DISP 1 | DISP 2 |
|--------|--------|
| 1 ON | 1 ON |
| 2 OFF | 2 OFF |
| 3 OFF | 3 OFF |
| 4 ON | 4 ON |
| 5 ON | 5 ON |
| 6 ON | 6 ON |
| | 7 OFF |
| | 8 OFF |

IND/REV DATE

NATURE DE LA MODIFICATION MODIFICATION

OBSTA
Reims Factory

Typical Lighting System Installation

3, Impasse de la
Blanchisserie
BP 56
51052 REIMS CEDEX
(France)
Tel. 03.26.85.74.00
Fax. 03.26.85.74.30

CODE:

PLAN:
DRAWING: O-CUS-00098-NAV

ECHELLE:
SCALE:

MATIERE:
MATERIAL:

ANNULE ET REMPLACE
CANCELED AND REPLACED

REPÈRE DESSIN
REFERENCE DRAWING:

DESSINE PAR:
DESIGNED BY:

DATE:

VERIFIE PAR:
CHECKED BY:

DATE:

APPROUVE PAR:
APPROVED BY:

DATE:

VISA:

R.PELLEGRINO

29/09/20

H.BURGAUD

29/09/20