

Day time Aluminum Warning sphere

2 half-spheres with one equipped with jaws, the other without.

- Weight : 6.5kg
- Dimension : 600 mm
- Tool : 13mm torque wrench

Step 1

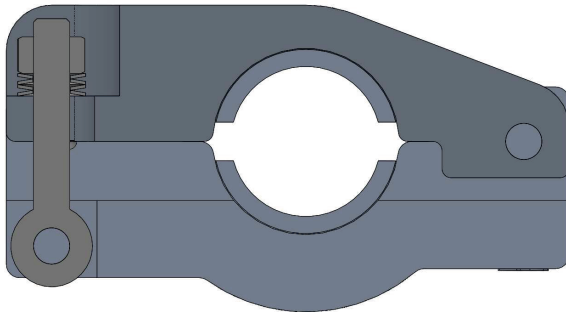
- Open the 2 jaws
- Position them into the cable
- Close them and fold down the nut to maintain into position



Step 2

Tighten the jaws with 13mm torque wrench

Warning : Washers shall be inside the nut.



Tighten up to 8 Nm torque
(equivalent tighten is up to connect the washers and then add 1/2 turn)

Step 3

Place the upper half-sphere (that has no jaws) while positioning the latches in front of their hooks

- Close the latches,
- The second latch to be closed shall be the one opposite to first

