

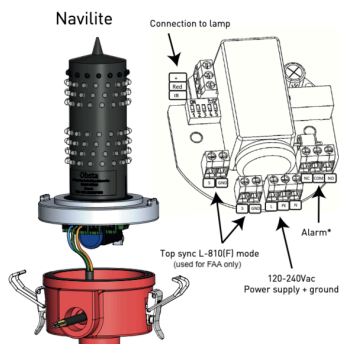
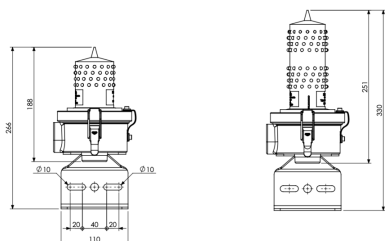
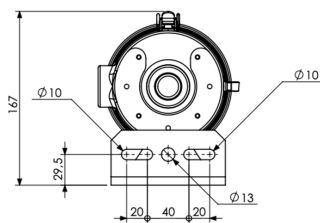
## Red light FAA L-810 as per FAA (AC 150/5345-43J)



- ✦ L-810 type red fixed with IR emissions (or L-810 (F) mimic with L-864 medium intensity) depending on internal switches positions
- ✦ ICAO low intensity type A B or E with IR depending on internal switches positions
- ✦ Light part fully molded with 8 levels of leds
- ✦ Redundant circuits for LED's with de-coupled IR
- ✦ Surge protection and alarm included
- ✦ normally open and normally close both available for the alarm complying with FAA Engineering Brief 98
- ✦ monobloc design with no loose part during installation
- ✦ Built-in flasher (activated through dip-switches with master/slave possibility) to mimic with L-864 medium intensity P/N113790RI-240, P/N113756U & P/N113714U or dual color L-865/L-864 medium intensity P/N113725UI, P/N113715U & P/N113758U,

Provided with stainless bracket for mounting and hot-galvanized cable entry coming with 3 meters of shielded cable 5G1,5

Option with IR (visible with Night Vision Goggles as per FAA Advisor 150/5345-43J)



Electrical Characteristics	
Life time	~10years
Main voltage	20-60Vdc
Average wattage	8W (steady mode) or 2W (@ 30 fpm mimic with L-864)
Mechanical Characteristics	
IP degree	IP65 in vertical position
Wiring	Terminal connection (2 power wires and 2 for the alarm)
Operating temperature	-40/+55°C
Weight	1,5 kg
Wire cross section	from 1 to 2,5 mm²
Attachment	2 NPT threaded holes
Photometric Characteristics	
IR intensity and wavelength	25mW/sr @ 850nm
Luminous intensity	> 32,5 Cd
Color night time	Red
Vertical beam spread	>10°
Horizontal beam spread	360°
Standards	
Standards compliance	ICAO annex 14 chapter 6, FAA (AC 150/5345-43J), UK MOD, Transport Canada