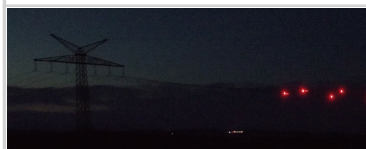
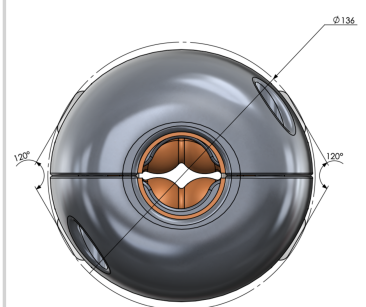
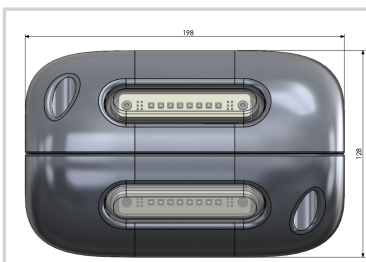


Obstruction lighting system for high voltage lines, red fixed low intensity with infrared

The BALISOR® LED system comprises :

- Full body casing in 2 only halves of anodized and cast aluminum. Corrosion-proof for use in marine and damp tropical climate conditions
- Simplest but most effective form factor with axial symmetry centered on the conductor. No rotation or mounting questions.
- No other shapes or appurtenance that could generate corona effect, imbalance or vibrations on lines
- Aluminium clamp as internal part of the design
- Very low weight and minimized wind pressure
- 6 captive screws only for tightening around the conductor in less than 1 minute.
- Optics in hard glass. No risk of UV fading or sand erosion.
- Inductive power supply operating in active redundancy. 4 circuits
- All internal electrical parts molded in high temperature withstand silicon resin. Waterproof by concept.
- Protection against electromagnetic fields
- Robust electric ballast
- Smooth surface for self-cleaning and anti-bird shape

The power supply by inductive effect ensures a light intensity compliant with ICAO red fixed low intensity with infrared when the value of the electric current crossing the line is by default above 20A, whatever is the voltage of the power line



Electrical Characteristics	
Maximum AC voltage	up to 800KV, 50/60 Hz, 2000A
Power source	Self-powered by induction
Mechanical Characteristics	
Cable diameter	Ø33,6-37mm
IP degree	IP66
Operating temperature	-40/+55°C
Maximum cable temperature	250°C peak
Weight	5,2kg
Attachment	Aluminium clamps matching with the diameter of the cable
Photometric Characteristics	
IR intensity and wavelength	20mW/sr @ 850nm
Luminous intensity	> 10 Cd
Standards	
Standards compliance	ICAO Aerodrome Design Manual Part 4 chapter 14