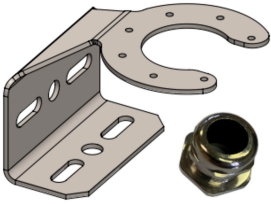


## NAVILITE-L810-HOLDER [P/N: 113928]

Support for one NAVILITE L-810 P/N113969, 113965 or 113969IR and cable gland. This kit is required in case of absence of rigid conduit 3/4NPT supporting the light



- Stainless bracket with a thickness of 3mm provided with cable entry and screws to attach the bracket below the light body
- This bracket allows to fix the light to any vertical or horizontal support



### Mechanical Characteristics

Weight	0.77 Kg
--------	---------

