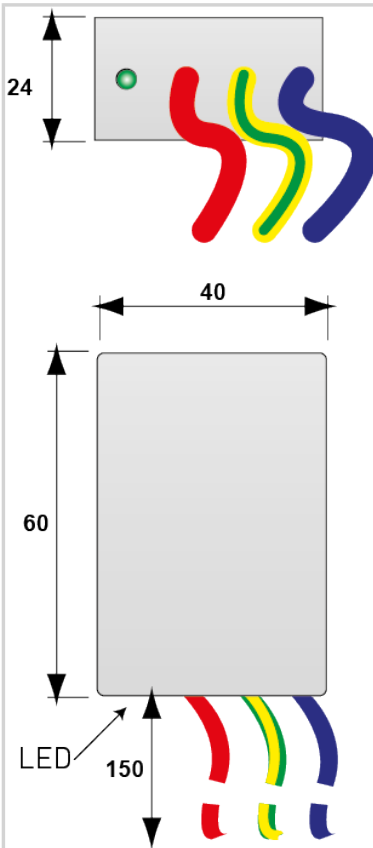


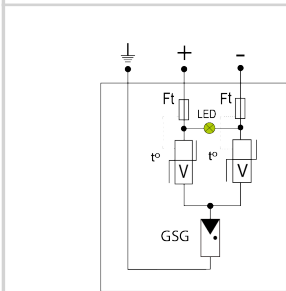
## Spare part for led lights



- Compact type 2+3 or type 3 SPD
- Ready-to-connect cables
- Status signaling
- For 48 Vdc or 48 Vac
- Protection class IP20
- Complies with IEC 61643-11 and EN 61643-11 standards



Disconnectors	
Thermal disconnecter	Internal
Electrical Characteristics	
SPD type	2+3
Network	48 Vdc
Nominal line voltage	48 V
Max. AC operating voltage	60 Vac
Max. DC operating voltage	68 Vdc
Follow current	None
Nominal discharge current 15 x 8/20 $\mu$ s impulses	1 kA
Max. discharge current max. withstand @ 8/20 $\mu$ s by pole	2 kA
Withstand on Combination waveform IEC 61643-11 Class III test: 1.2 /50 $\mu$ s - 8/20 $\mu$ s	3 kV
Protection mode(s)	Common/Differential mode
Mechanical Characteristics	
Technology	MOV+GDT
Connection to Network	Wires
Mounting	Wall or plate
Housing material	Thermoplastic UL94 V-0
Operating temperature	-40/+85°C
Protection rating	IP20
Failsafe mode	Disconnection from AC network
Disconnection indicator	Green LED OFF
Operating indicator	Green Led ON
Dimensions	See diagram
Standards	
Standards compliance	IEC 61643-11 / EN 61643-11
Certification	EAC



V: Varistor  
 GSG: Specific gas tube  
 LED: Disconnection indicator  
 Ft: Thermal fuse  
 t\*: Thermal system disconnection