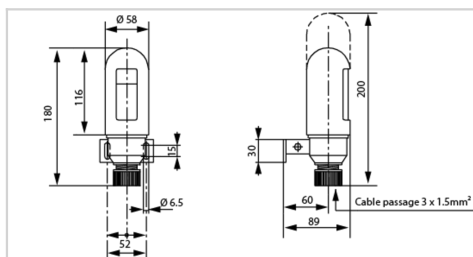


Photocell for day-twilight intensity change in accordance with ICAO and FAA for all OBSTA 48Vdc lights or for the change of color and light-intensity of the led obstafash series



- ✦ plug-in modular construction with plated contact surfaces
- ✦ automatic control of the red or dual obstruction lighting according to ambient light in compliance with FAA and ICAO twilight/night triggering level
- ✦ timer to prevent the functioning of the cell at inopportune times (lightning)



Electrical Characteristics	
Main voltage	48VDC (-10%; +15%)
Average wattage	1.5VA
Max. admissible current	10A contact closed in darkness
Mechanical Characteristics	
IP degree	IP67
Wiring	by 3 screw terminals
Operating temperature	-25°C/+60°C
Weight	0.3 kg
Weight	0.3 kg
Wire cross section	up to 6mm <sup>2</sup>
Attachment	by harness and screws
Standards	
Standards compliance	ICAO annex 14 chapter 6, FAA (AC 150/5345-43H), EASA, DGAC, CAA (CAP 168)