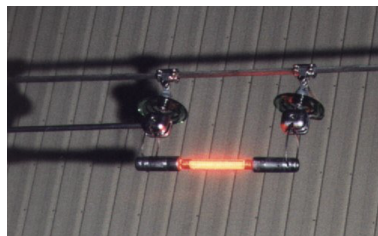
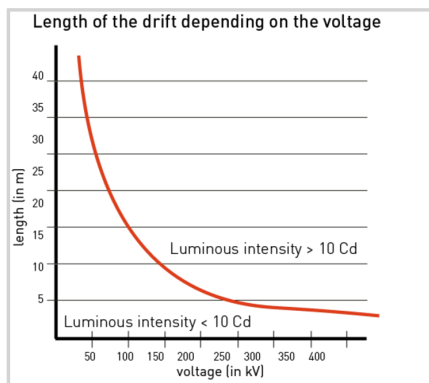


Obstruction lighting system for high voltage lines, red fixed low intensity



- suitable for high voltage up to 550KV with fixing accessories adapted to the diameter of the cable
- rigid capacitive element in aluminium easy to install
- optimized distance of 300mm between the power cable and the capacitive element providing optimal power to the light
- clamps adapted to the diameter of the cable
- long life BALISOR lamp B49 P/N100618 with interference suppression included
- red fixed color with light intensity higher than 10 candelas, the BALISOR® fall into the ICAO low intensity category.
- a very long lifetime of the balisor lamp, essential to continuous operation of high voltage lines
- robust, operates as soon as power line is turned on, no current in the conductor is required

The power supply by capacitive elements ensures a constant light intensity whatever is the value of the electric current crossing the line



Electrical Characteristics	
Power source	Autonomous by capacitive effect
Mechanical Characteristics	
Attachment	Aluminium clamps matching with the diameter of the cable
Photometric Characteristics	
Luminous intensity	> 10 Cd
Standards	
Standards compliance	ICAO Aerodrome Design Manual Part 4 chapter 14