

Red medium intensity NVG compatible (infrared night vision goggles) and FAA L-864 certified including 3 flashheads OBSTAFLASH 120° especially designed for obstacle such as stacks with a diameter of 6 meters maximum and 3 legs based pylons

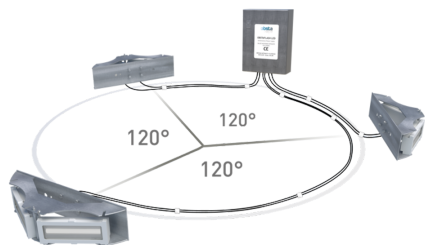
2 flashheads OFP-120-R-10 with :

- 2 led projectors IP66 with 10 meters of cable
- Aluminium and glass envelope
- Vertical stainless support

1 flashhead OFP-120-R with junction box OFP-JB-6P-R

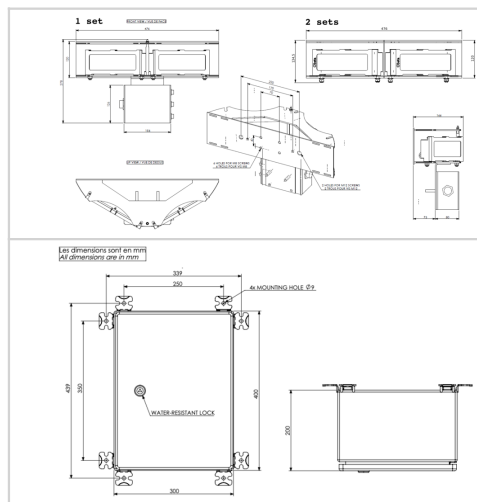
A power supply :

- Stainless enclosure with interlock switch and cable entry at the bottom
- Surge protection included
- Alarm relay in case of projector failure or power supply failure
- Test button with auto/day/night modes
- 8 led indicators for easy diagnostic
- In option side lights L-810(L)(F) NAVILITE-IR-FAA-120-240V P/N 113969IR for mid level



EP3230651, FR1462349, Pat. 10,247,386

Patents:



Electrical Characteristics	
Main voltage	110VAC to 240VAC +/-10% 50/60Hz
Average wattage	8W (night time only @ 30fl per minute)
Mechanical Characteristics	
Wiring	For each projector, 10 meters of molded cable For power supply, entry of power & signal cable by glands nickel plated brass and connection by terminals
Operating temperature	-40/+55°C
Weight	38 kg
Size of the light	120mm (height) x 480mm (width)
Size of the power supply	400mm (height) x 300mm (width) x 200mm (dept)
Weight	3,5kg
Photometric Characteristics	
Effective light output night mode at 0° on site	2000cd (red) with IR
Color night time	Red
Vertical beam spread	>3°
Horizontal beam spread	360° with minimum 3 flashheads fixed at 120° around the obstacle
Flash per minute	30
Standards	
Standards compliance	ICAO annex 14 chapter 6, FAA (AC 150/5345-43J), UK MOD, Transport Canada
Certification	FAA (AC 150/5345-43J), ETL listed, DGAC(Fr)