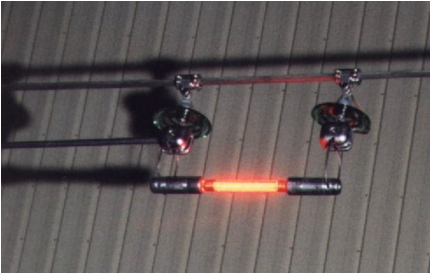


## Obstruction lighting system for high voltage lines, red fixed low intensity



The BALISOR® system comprises :

- ✦ long life cold neon discharge lamp B49 manufactured by OBSTA,
- ✦ a set of capacitive tapings in aluminium, the length depends on the voltage of the line to be protected,
- ✦ a set of flexible accessories for suspension and insulation which depends on diameter of the cable

The power supply by capacitive effect ensures a constant light intensity whatever is the value of the electric current crossing the line

Poids d'un élément	Code	Désignation	110KV	130KV	230KV	300KV et plus
0,85 kg	100037	Mât/chaîne équipée	7	6	4	2
2,50 kg	100031*	Isolateur verre équipé	7	6	4	2
0,10 kg	100049*	Traçage de filout	1	1	1	-
0,50 kg	100028	Palan/chaîne simple	7	6	-	-
2,00 kg	100010	Palan/chaîne porteur lampe	-	-	2	-
1,15 kg	100012	Palan/chaîne porteur dérivé	-	-	2	2
1,10 kg	100013	Élément support (conducteur auxiliaire)	5	4	3	1
0,50 kg	100006	Suspension souple	2	2	-	-
0,10 kg	100008	Électrode à terre	-	-	-	2
0,10 kg	100035	Traçage de filout	2	2	-	1
2 kg	100037	Mât/chaîne équipée système B	-	-	-	2
0,10 kg	100006	Isolateur anti-éclaboussure	-	-	-	1
0,30 kg	100019	Coussinets protection corona	-	-	-	1
4,70 kg	100016	Lampe BALISOR B49	1	1	1	1
4,00 kg	100016	Lampe BALISOR B13	-	-	-	1

Electrical Characteristics	
Power source	Autonomous by capacitive effect
Mechanical Characteristics	
Attachment	Aluminium clamps matching with the diameter of the cable
Photometric Characteristics	
Luminous intensity	> 10 Cd
Standards	
Standards compliance	ICAO Aerodrome Design Manual Part 4 chapter 14

Length of the drift depending on the voltage

