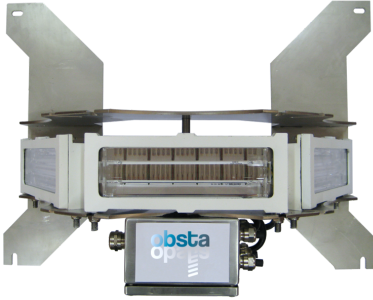


The dual color medium intensity flashhead OBSTAFLASH180 is designed for day and night marking of obstacle such as large stacks, intermediate pylons with 4 legs, facade of high rise buildings. A system that includes minimum 2 OBSTAFLASH180 around the



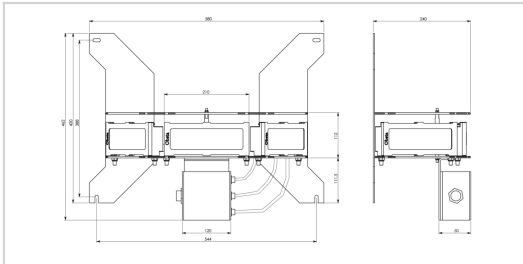
EP3230651, FR1462349, Pat. 10,247,386

Patents:

The flash-head includes

- ✦ 3 led projectors in glass and aluminium coming with 0.75 meter of molded cable
- ✦ 1 junction box
- ✦ Stainless support for the 3 projectors and the junction box

This flash-head must be powered through external obsta power cabinet to be ordered separately



Mechanical Characteristics	
Wiring	Entry of cable by glands nickel plated brass and connection by terminals
Operating temperature	-40/+55°C
Weight	8 kg
Size of the light	420mm (height) x 580mm (width)
Weight	6kg
Photometric Characteristics	
Effective light output day time at 0° on site	20 000cd (white)
Effective light output twilight mode at 0° on site	20 000cd (white)
Effective light output night mode at 0° on site	2000cd (red) with IR
Color day/twilight time	white
Color night time	Red
Horizontal beam spread	360° with minimum 2 flashheads on opposite side
Flash per minute	40
Standards	
Standards compliance	ICAO annexe 14 chapter 6 (8th edition 07/2018), EASA (4th edition 2017)