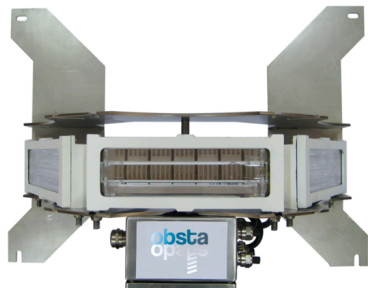


The red medium intensity flashhead OBSTAFLASH180 is designed for night marking of obstacle such as large stacks, intermediate pylons with 4 legs, facade of high rise buildings. A system that includes at least 2 OBSTAFLASH180 around the obstacle and an OBSTA power



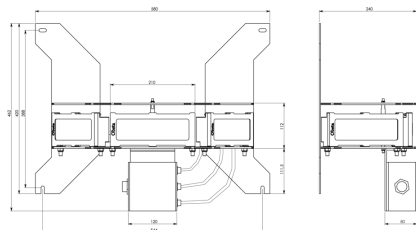
EP3230651, FR1462349, Pat. 10,247,386

Patents:

This flash-head includes

- ✦ 3 led projectors in glass and aluminium painted coming with 0.75 meter of molded cable
- ✦ 1 junction box
- ✦ Stainless support for the 3 projectors and the junction box

This flash-head must be powered through a shielded cable 3G1,5 (directly or through an additional junction box) to an obsta power cabinet to be ordered separately



Electrical Characteristics	
Average wattage	8W (night time only @ 30fl per minute)
Mechanical Characteristics	
Wiring	Entry of cable by glands nickel plated brass and connection by terminals
Operating temperature	-40/+55°C
Weight	9.45 kg
Size of the light	420mm (height) x 580mm (width)
Weight	6kg
Photometric Characteristics	
Effective light output night mode at 0° on site	2000cd (red) with IR
Color night time	Red
Horizontal beam spread	360° with minimum 2 flashheads on opposite side
Flash per minute	30
Standards	
Standards compliance	ICAO annex 14 chapter 6, FAA (AC 150/5345-43H), EASA, DGAC, CAA (CAP 168)